

Southport and Formby District General Hospital Emergency Department Monthly Bulletin: October 2010 to September 2011

This bulletin provides a breakdown of all injury attendances at Southport and Formby District General Hospital Emergency Department (ED) between October 2010 and September 2011.

Between October 2010 and September 2011 there were 13,352 ED attendances. Injury attendances peaked in December (n=1,319), with February (n=917) having the least number of injury attendances (**Figure 1**).

During the 12 month period there were more male (51%) injury attendances than female presenting at Southport and Formby District General Hospital ED.

Figure 2 presents the age group of injury attendances. Over a third (36%) of injury attendees were aged 30 to 59 years, whilst 35% were over 60 years old. The low number of injury attendees under the age of 15 years presenting at Southport and Formby District General Hospital ED is probably due to the close proximity of the local Paediatric ED located at Ormskirk General Hospital.

Table 1 details the injury group of injury attendances. The majority of injury attendances

were classified as other injury (69%). Over one in ten (11%) were recorded as road traffic collisions (RTCs) and 9% were recorded as sports injury.

Table 2 illustrates the source of referral for patients presenting with injuries. The majority (73%) of injury attendees self-referred.

Table 3 presents injury attendances by location of incident. Just under half (47%) of all injury locations were recorded as in the home. Four in ten (40%) injuries were recorded to have occurred in a public place.

Table 4 shows the discharge destination of injury attendances. Four in ten (40%) attendees were discharged requiring no follow-up.

Assault attendees presenting at Southport and Formby District General Hospital ED between October 2010 and September 2011 were mainly male (60%) and the majority (60%) were aged between 15 and 29 years of age. As **Table 5** shows the primary location of assault was in a public place (63%).

Figure 1: Gender of injury attendances by month, October 2010 to September 2011

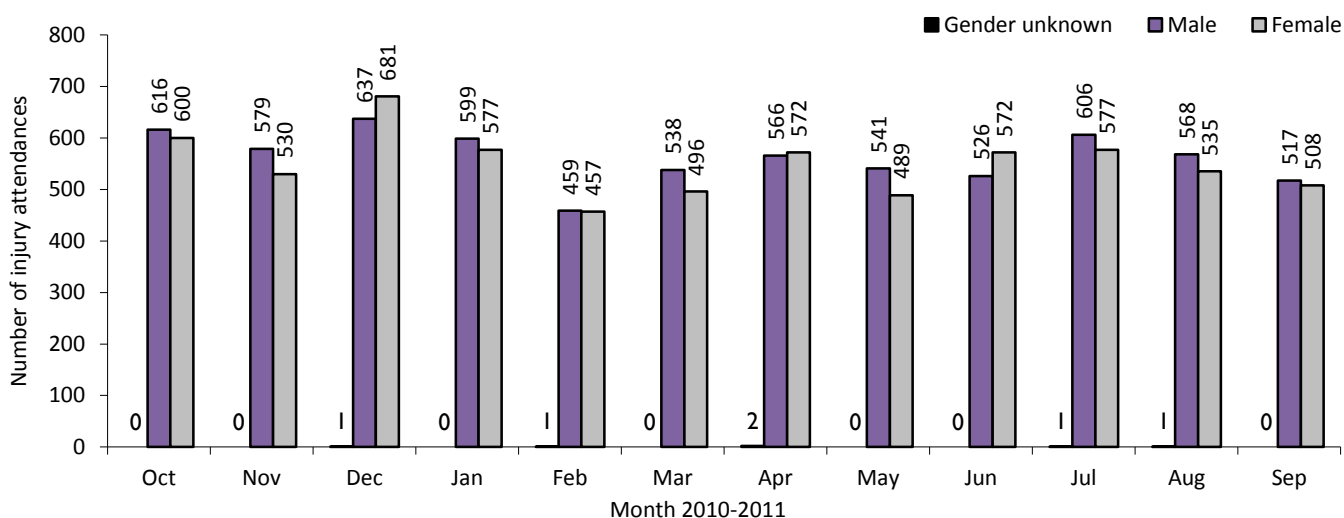


Figure 2: Age group of injury attendances by month, October 2010 to September 2011

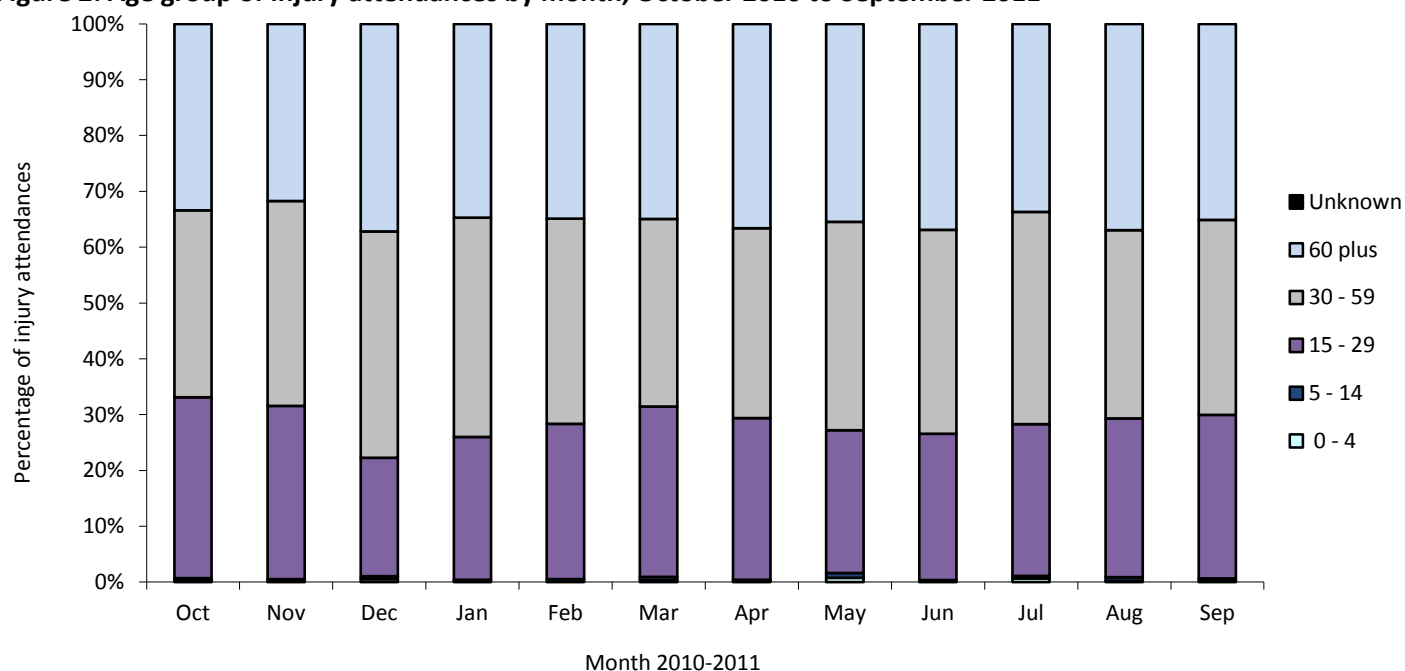


Table 1: Injury attendances by injury group, October 2010 to September 2011¹

Injury group	Oct	Nov	Dec	Jan	Feb	Mar	Apr	May	Jun	Jul	Aug	Sep	Total	%
Other injury	838	735	1035	843	641	652	780	688	771	845	779	669	9276	69
RTC	126	146	137	112	93	123	118	130	121	108	117	106	1437	11
Sports injury	108	96	25	82	92	145	118	97	88	101	101	129	1182	9
Assault	80	73	64	72	48	49	65	68	67	67	56	51	760	6
Deliberate self-harm	64	59	58	67	43	65	59	47	51	63	51	70	697	5
Total	1216	1109	1319	1176	917	1034	1140	1030	1098	1184	1104	1025	13352	100

Table 2: Injury attendances by source of referral, October 2010 to September 2011²

Source of referral	Oct	Nov	Dec	Jan	Feb	Mar	Apr	May	Jun	Jul	Aug	Sep	Total	%
Self referral	872	789	964	821	659	744	841	749	805	866	833	752	9695	73
Emergency services	128	143	179	160	139	139	159	133	140	140	117	128	1705	13
Other	137	87	85	95	57	71	71	79	74	105	81	78	1020	8
Health care provider: same or other	32	35	32	36	18	27	20	22	27	27	34	26	336	3
Police	21	19	20	37	21	23	18	20	28	22	16	17	262	2
General medical practitioner	13	15	20	9	8	16	13	11	15	12	10	13	155	1
Unknown	***	12	13	14	13	12	13	11	***	9	11	8	124	1
Work	***	***	***	***	***	***	***	***	***	***	***	***	30	0
Educational establishment	7	6	***	***	***	***	***	***	***	***	***	***	25	0
Local authority social services	***	***	***	***	***	***	***	***	***	***	***	***	***	0
Total	1216	1109	1319	1176	917	1034	1140	1030	1098	1184	1104	1025	13352	100

¹ Please note that, due to low numbers, firework injury has been included in other injury.

² Please note that in all tables all numbers less than five have been suppressed in line with patient confidentiality and if there is only one number in a category then two numbers will be suppressed at the next level (e.g. <6) in order to prevent back calculations from totals.

Table 3: Injury attendances by location of incident, October 2010 to September 2011

Location	Oct	Nov	Dec	Jan	Feb	Mar	Apr	May	Jun	Jul	Aug	Sep	Total	%
Home	617	507	565	516	424	480	525	504	534	562	504	493	6231	47
Public place	458	427	618	507	349	430	459	406	435	479	429	398	5395	40
Other	<69	104	75	96	87	68	99	67	78	87	116	80	1025	8
Work	71	<70	<58	<57	<55	<50	<57	<52	<52	<56	<56	<54	677	5
Educational establishment	***	***	***	***	***	7	***	***	***	***	***	***	24	0
Total	1216	1109	1319	1176	917	1034	1140	1030	1098	1184	1104	1025	13352	100

Table 4: Discharge destination of all injury attendances, October 2010 to September 2011

Discharge destination	Oct	Nov	Dec	Jan	Feb	Mar	Apr	May	Jun	Jul	Aug	Sep	Total	%
Discharged - did not require any follow-up treatment	480	461	522	375	318	369	461	420	432	500	459	480	5277	40
Admitted	285	207	282	249	197	201	203	203	181	211	186	177	2582	19
Discharged – follow-up treatment to be provided by other healthcare provider	221	201	189	272	185	239	237	174	258	212	171	168	2527	19
Referred to fracture clinic	76	105	167	149	90	88	106	96	98	111	112	67	1265	9
Left department before being treated	53	51	59	51	58	57	50	50	42	57	78	50	656	5
Referred to other health care professional	42	34	37	40	35	23	30	36	50	37	44	38	446	3
Transferred to other health care provider	9	14	15	18	16	20	20	31	16	23	18	16	216	2
Referred to other out-patient clinic	22	14	17	12	6	16	13	10	10	15	18	11	164	1
Referred to ED clinic	14	12	17	5	10	11	10	***	8	11	6	5	113	1
Left department having refused treatment	11	10	11	5	***	9	6	6	***	7	12	10	91	1
Other	***	***	***	***	***	***	***	***	***	***	***	***	8	0
Died in department	***	***	***	***	***	***	***	***	***	***	***	***	<7	0
Unknown	***	***	***	***	***	***	***	***	***	***	***	***	***	0
Total	1216	1109	1319	1176	917	1034	1140	1030	1098	1184	1104	1025	13352	100

Table 5: Location of assault for assault attendances, October 2010 to September 2011

Location	Oct	Nov	Dec	Jan	Feb	Mar	Apr	May	Jun	Jul	Aug	Sep	Total	%
Public place	51	38	37	46	35	25	41	44	48	44	38	33	480	63
Home	12	15	15	11	10	11	10	10	9	14	9	7	133	18
Other	11	18	9	11	***	9	12	12	5	7	8	9	114	15
Work	<7	***	***	***	***	***	***	***	<6	***	***	***	<34	4
Educational establishment	***	***	***	***	***	***	***	***	***	***	***	***	***	0
Total	80	73	64	72	48	49	65	68	67	67	56	51	760	100

Published January 2012

Nicola Davenport (Merseyside and Cheshire TIIG Officer)

Centre for Public Health, Faculty of Health and Applied Social Sciences, Liverpool John Moores University
2nd Floor, Henry Cotton Campus, Liverpool, L3 2ETTel: 0151 231 4500 Email: N.M.Davenport@ljmu.ac.ukWebsite: www.tiig.info (please note all data requests should be made through the TIIG website)